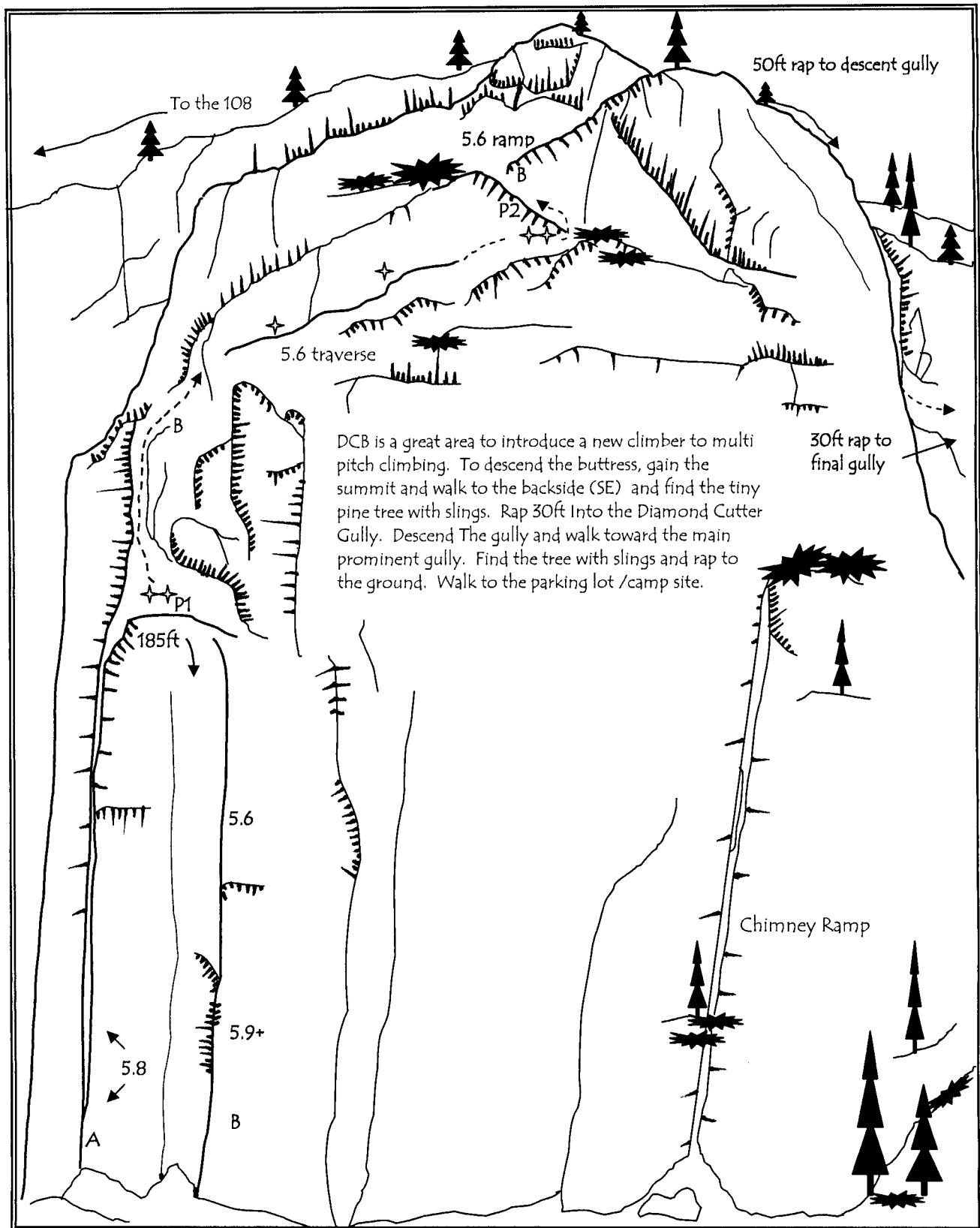


Diamond Cutter Buttress



- A) Right Wing Odyssey - 5.8 chimney ** Pro small to #3
- B) Diamond Cutter Direct - 5.9+/5.10- * (3 pitches) Pro to #3.5

Diamond Cutter Area has excellent facilities - Camping for \$5.00 gets you H2O and bathrooms. To gain the buttress walk east to the prominent buttress hidden in the tree line. Excellent morning climb. Gets summer sun around 11am.